



Impact of Social Sciences & Humanities

4-5 October 2018, Copenhagen

Gemyse 2, 11.30-12.45

Intermediary institutions

Lars Klüver(Chair)

Wendy Naus

Chris Fellingham



Impact of Social Sciences & Humanities

4-5 October 2018, Copenhagen

Intermediary institutions

Lars Klüver

*Director Danish Board of
Technology Foundation,
Denmark*



Impact of Social Sciences & Humanities

4-5 October 2018, Copenhagen

Intermediary institutions

Wendy Naus

*Executive Director of The
Consortium of Social Science
Associations (COSSA), USA*

STIMULATING IMPACT: Intermediary Institutions

Wendy A. Naus
Executive Director
Consortium of Social Science Associations, USA

The Impact Agenda for Social Sciences & Humanities Conference
Copenhagen, Denmark
October 5, 2018

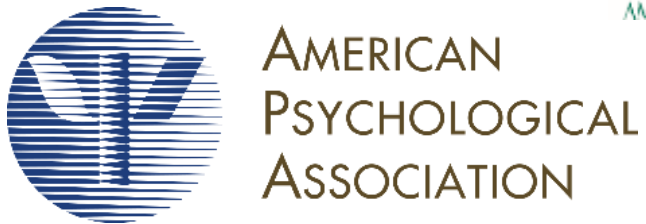


Outline

1. Why we need intermediary institutions
2. Intermediary institutions in the U.S.
3. Remaining questions

CSSA

CONSORTIUM of SOCIAL SCIENCE ASSOCIATIONS



Association of American Law Schools



One.

Why we need intermediary institutions in
the United States



AMERICAN ACADEMY
OF ARTS & SCIENCES



PERCEPTIONS OF SCIENCE IN AMERICA

A REPORT FROM
THE PUBLIC FACE OF SCIENCE INITIATIVE

Available at:
www.amacad.org

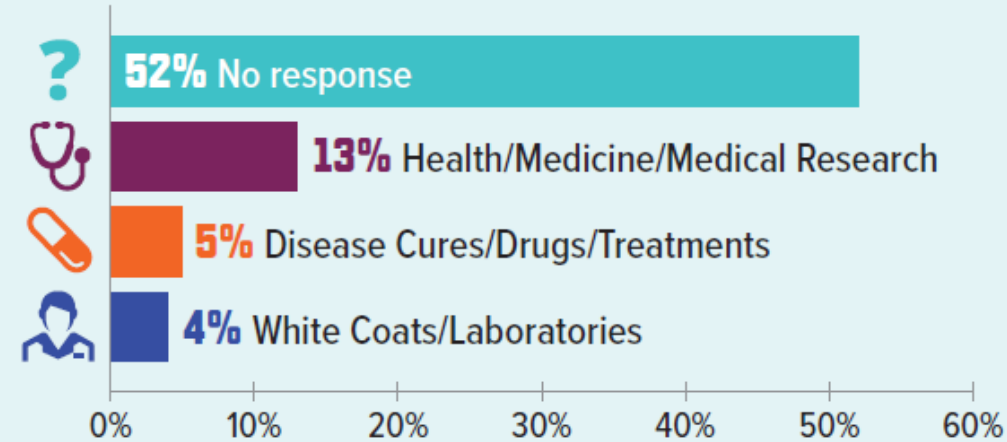


- The term “science” is interpreted differently by different individuals.
- The “Deficit Model” (i.e. the assumption that improving “science literacy” and knowledge will lead to more favorable public attitudes/acceptance of scientific findings) is proving not to be the panacea some had thought.

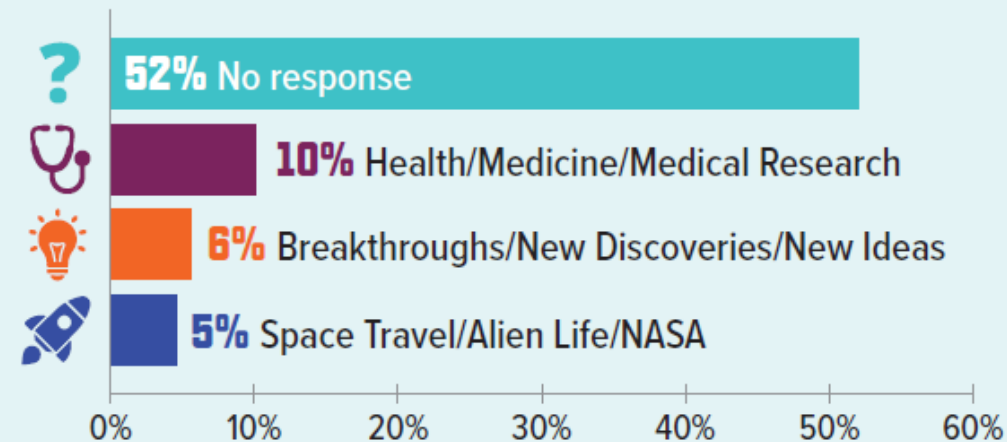


What is the Very First Thing That Comes to Mind
When You Hear the Phrase _____?

“Scientific Research”



“Scientific Discoveries and Advances”

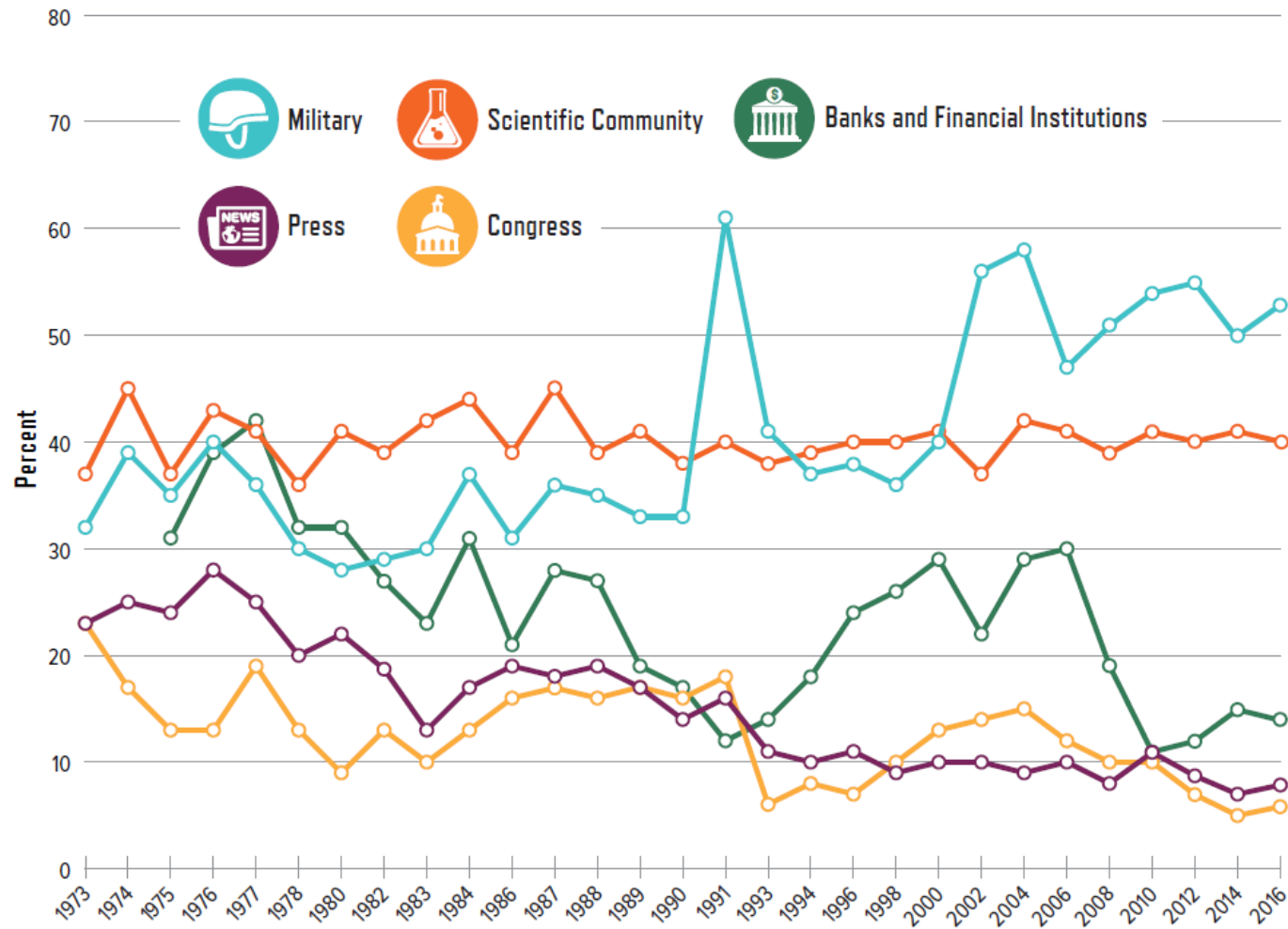


SOURCE: ScienceCounts, unpublished data from “Raising Voices for Science: Exploratory and Benchmarking Survey” (survey conducted October 2015).



Confidence in Scientific Leaders Remains Relatively Stable

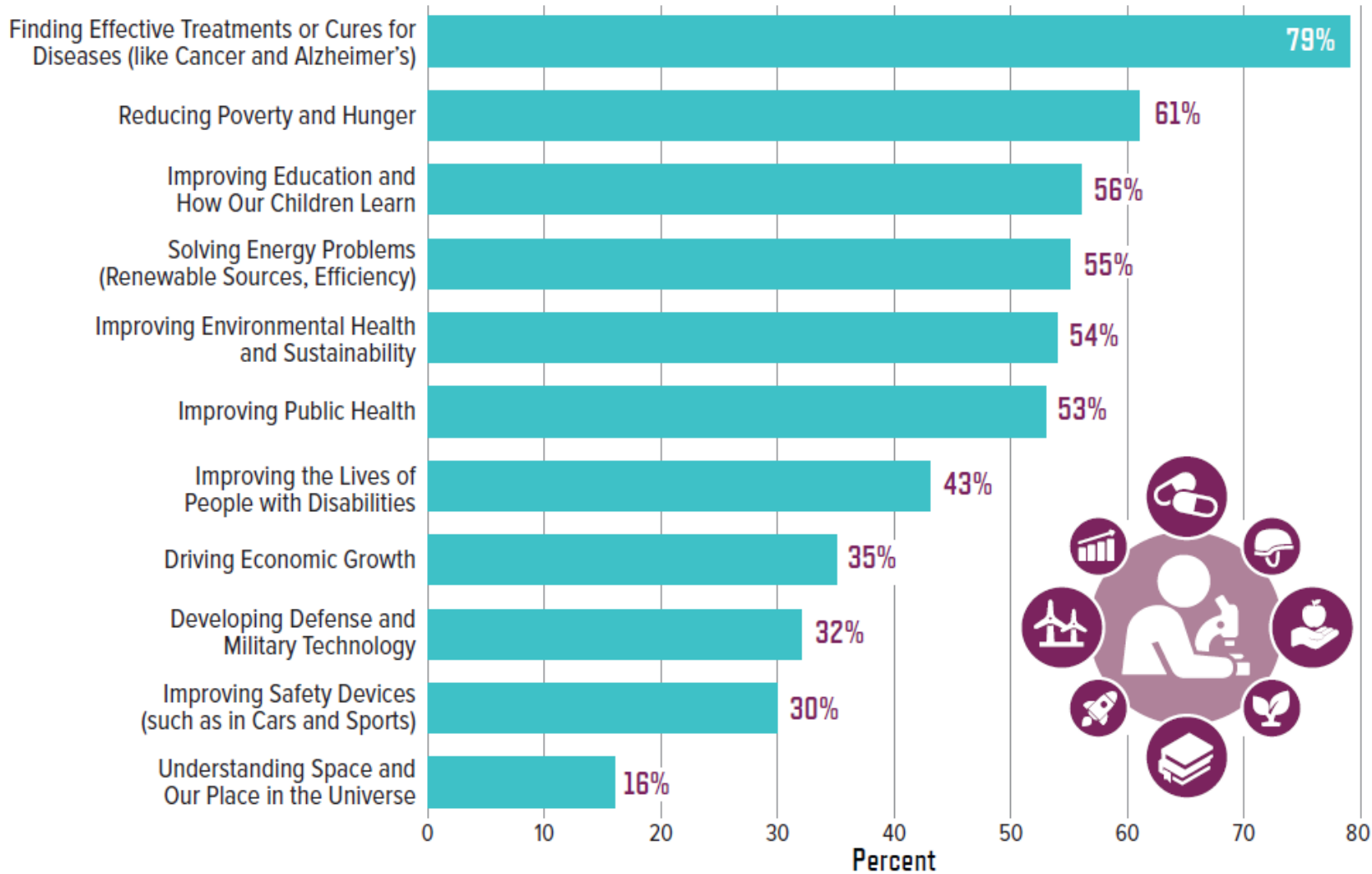
Percentage of U.S. Adults with a “Great Deal” of Confidence in the Leaders of the Following Institutions:



SOURCE: NORC at the University of Chicago, *General Social Survey* (1973–2016).



Percentage of Respondents Who Consider These Outcomes of Scientific Research to be an “Urgent Priority”:

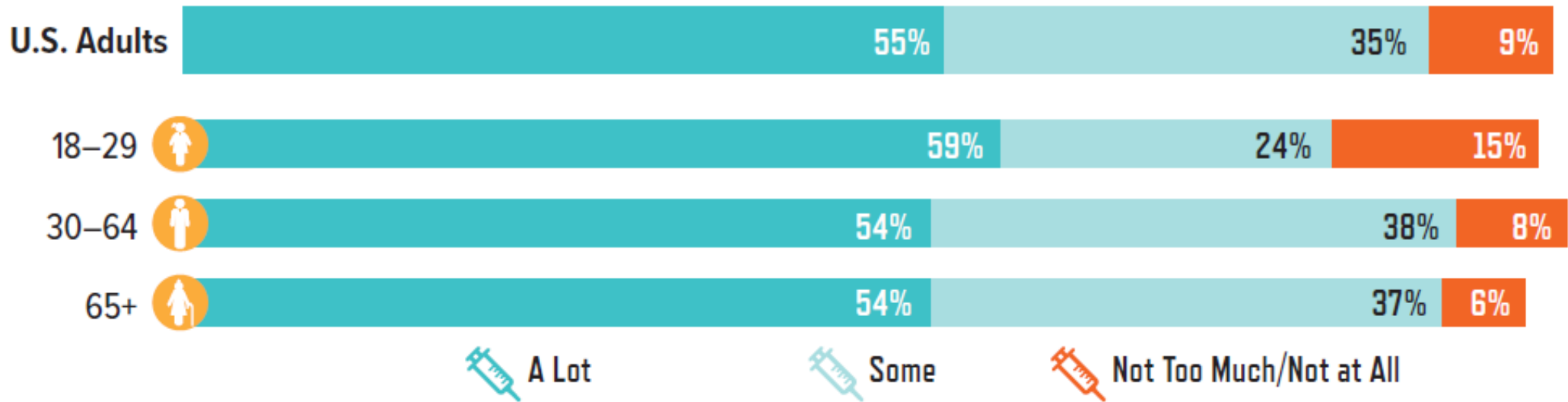


SOURCE: ScienceCounts, unpublished data from “Raising Voices for Science: Exploratory and Benchmarking Survey” (survey conducted October 2015).



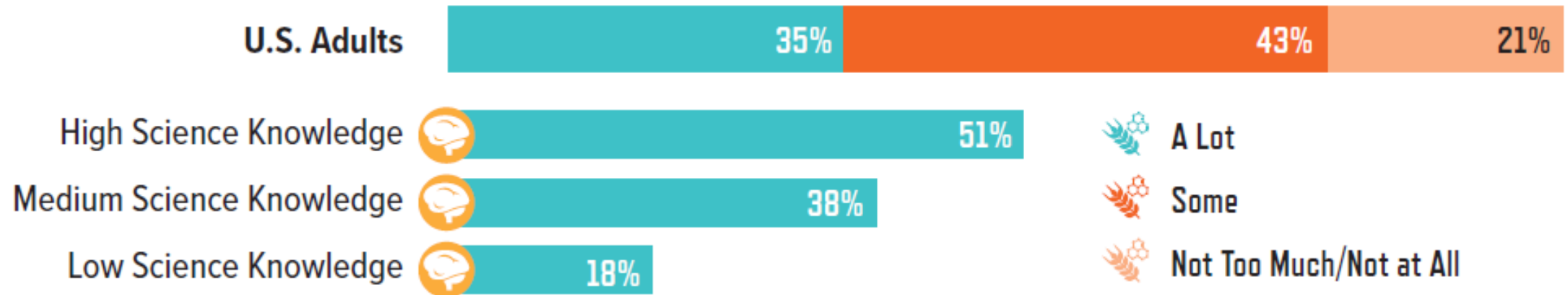
CASE STUDY: Vaccine Safety

Degree of Trust in Medical Scientists to Provide Full and Accurate Information on the MMR Vaccine, by Age of Respondent:



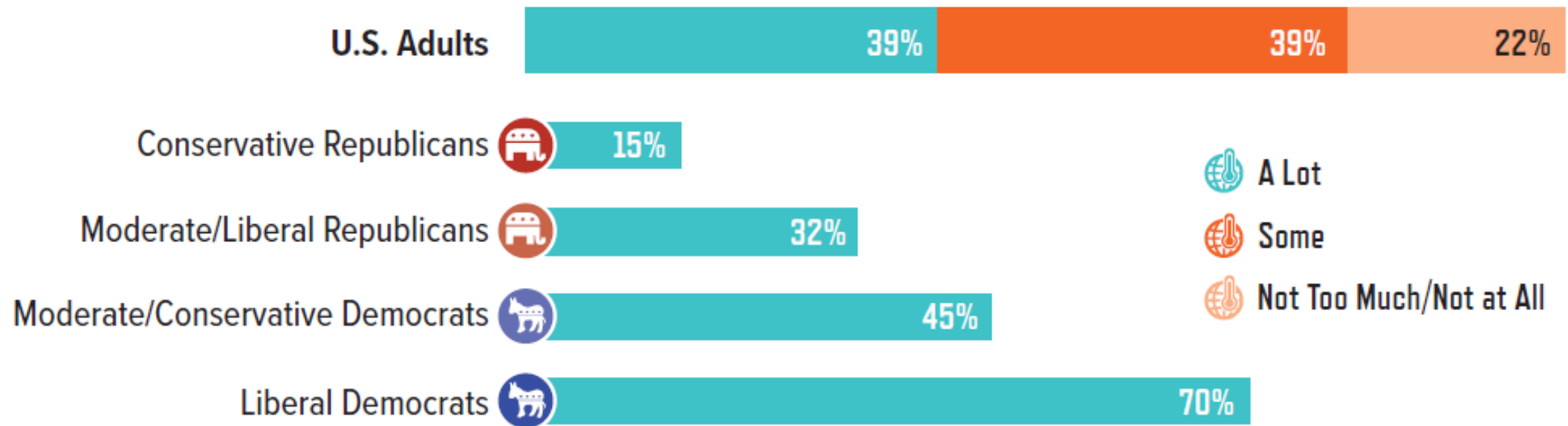
CASE STUDY: Genetically Modified Foods

Degree of Trust in Scientists to Provide Full and Accurate Information on the Health Effects of GM Foods, by Science Knowledge of Respondent:



CASE STUDY: Climate Change

Degree of Trust in Climate Scientists to Provide Full and Accurate Information about the Causes of Climate Change, by Political Affiliation of Respondent:



Conclusions

- There is no single “public” that perceives science through a shared lens of experiences and values.
- Mindfulness among science communicators, advocates, and researchers of the inherent multiplicity of attitudes toward science is necessary for effective, evidence-based communication and outreach efforts.



Two.

Intermediary Institutions in the U.S.



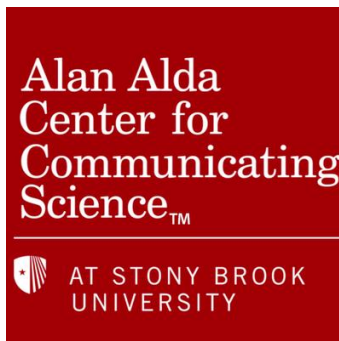
Types of Intermediary Institutions

1. Science Communication
2. Federal Government (lobbying/expertise/advice)
3. Individual States and Localities



Science Communication

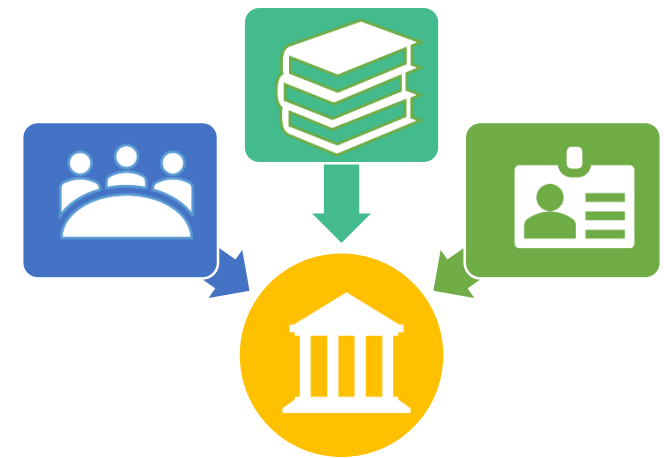
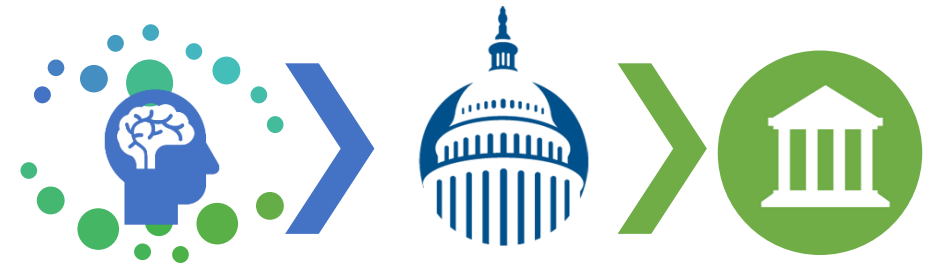
- STUDY science communication
 - Using science to improve science communication
- DO (and train) science communication
 - Science Counts
 - Alan Alda Center for Communicating Science
 - March for Science
 - Many others



MARCH FOR SCIENCE

Federal Government

- CONNECT science with government (lobbying/advocacy)
 - COSSA
- PRODUCE science for government (expertise/advisory bodies)
 - National Academies of Science
 - Agency/Department Advisory Councils
 - White House Office of Science and Technology Policy



*The National
Academies of*

SCIENCES
ENGINEERING
MEDICINE



The National Academies of Sciences, Engineering and Medicine (NASEM) is a **private, non-profit society** of distinguished scholars. Established by an Act of Congress, signed by President Abraham Lincoln in 1863, the NAS is charged with **providing independent, objective advice to the nation** on matters related to science and technology.



Recent NASEM Efforts

The Value of **SOCIAL, BEHAVIORAL,** and **ECONOMIC SCIENCES** to National Priorities

A Report for
THE NATIONAL SCIENCE FOUNDATION

Committee on the Value of Social, Behavioral, and Economic Sciences to National Priorities
Division of Behavioral and Social Sciences and Education

A Consensus Study Report of
The National Academies of
SCIENCES · ENGINEERING · MEDICINE

THE NATIONAL ACADEMIES PRESS
Washington, D.C.
www.nap.edu



CONCLUSION 1

Overall, the social, behavioral, and economic sciences produce a better understanding of the human aspects of the natural world, contributing knowledge, methods, and tools that further the mission of the National Science Foundation to advance health, prosperity and welfare, national defense, and progress in science.

CONCLUSION 2

The understanding, tools, and methods provided by the social, behavioral, and economic sciences—including research supported by the National Science Foundation—provide an essential foundation that helps other agencies achieve their missions.

CONCLUSION 3

The social, behavioral, and economic sciences have provided advances in understanding and tools and methods that have been applicable to business and industry and that enhanced the U.S. economy.

Recent NASEM Efforts

A NATIONAL ACADEMY OF SCIENCES SERIES ABOUT SCIENTIFIC DISCOVERY AND HUMAN BENEFIT

FROM RESEARCH TO REWARD

Matching Kidney Donors with Those Who Need Them—and Other Explorations in Economics

Each year, more than 100,000 people in the United States need a kidney transplant. Less than 20 percent of them get one. On average, 13 people die each day waiting for a kidney. Often relatives and friends who are eager to donate unrelated volunteer donors, there's no nationwide system that sound like a medical problem help solve through an intricate network of intermediaries. In the news, economists have been able to save lives by spurring medical progress. "Economics is about when he won the Nobel Prize for his work on kidney donor matching, it's about a kidney donor dilemma at studying complex systems improved. Someone in need of a system so the donated deceased donors, and a patient has a friend who is incompatible. Transplant patients with incompatible there still weren't enough much of a dent in the be thick," Roth says.

Newsroom | Directory | Meetings & Events | Support the NAS

NATIONAL ACADEMY OF SCIENCES

Search Site

ABOUT THE NAS | MEMBERSHIP | PROGRAMS | PUBLICATIONS | MEMBER LOGIN

Publications | From Research to Reward | From Research to Reward Home

PUBLICATIONS

Proceedings of the National Academy of Sciences

National Academies Press

A NATIONAL ACADEMY OF SCIENCES SERIES ABOUT SCIENTIFIC DISCOVERY AND HUMAN BENEFIT

FROM RESEARCH TO REWARD

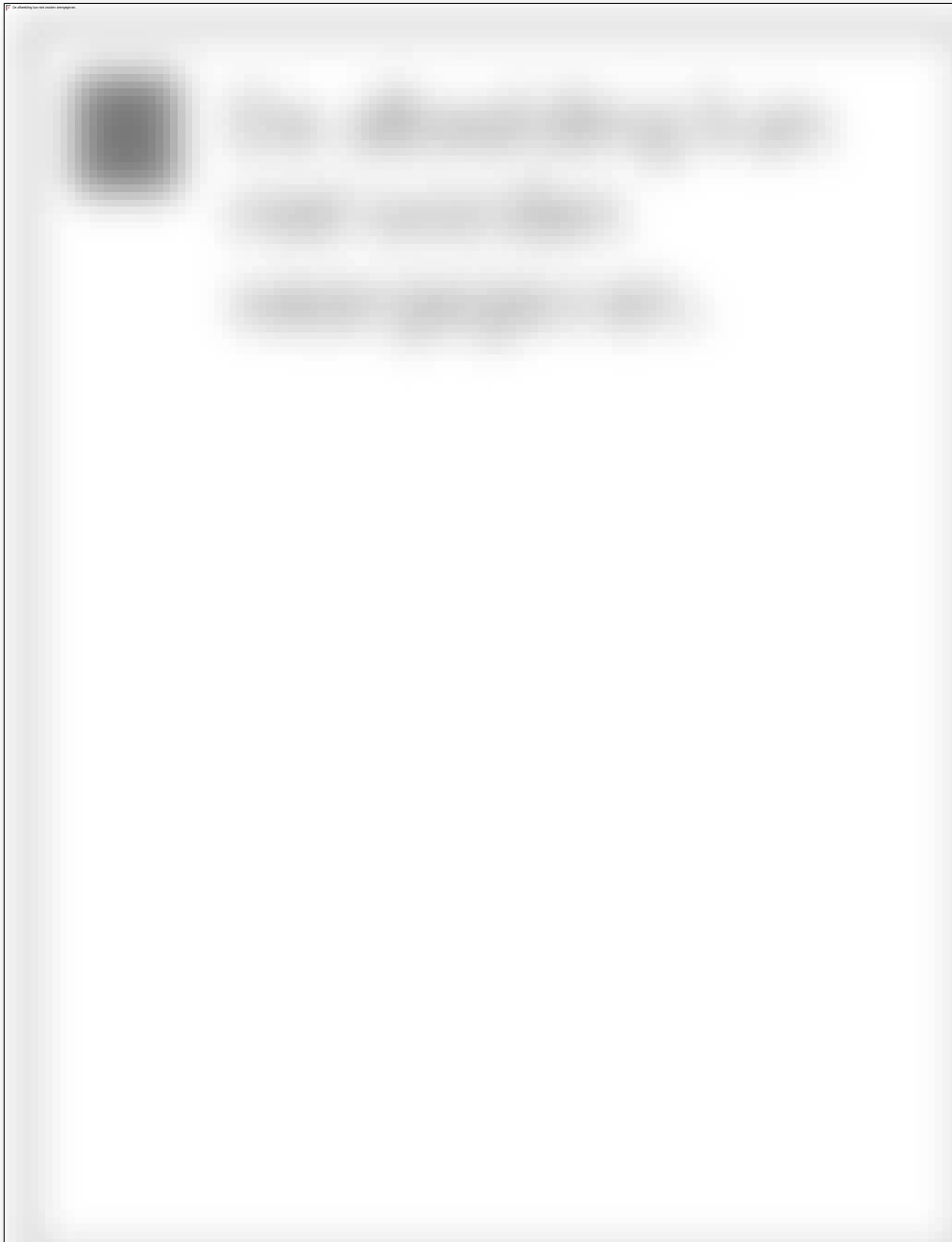
Scientific discovery and human progress go hand in hand. This new series, *From Research to Reward*, demonstrates how advances in our understanding of natural processes often lead to surprising and remarkable benefits for society. The National Academy of Sciences is pleased to share true stories of the men and women who strive to solve the puzzle of how the world works and who creatively apply new scientific knowledge to make it a better place.

[View Outreach Toolkit](#)

Eye on the Road: Researchers Explore Ways to Protect Drivers from The...

HUMAN ERROR





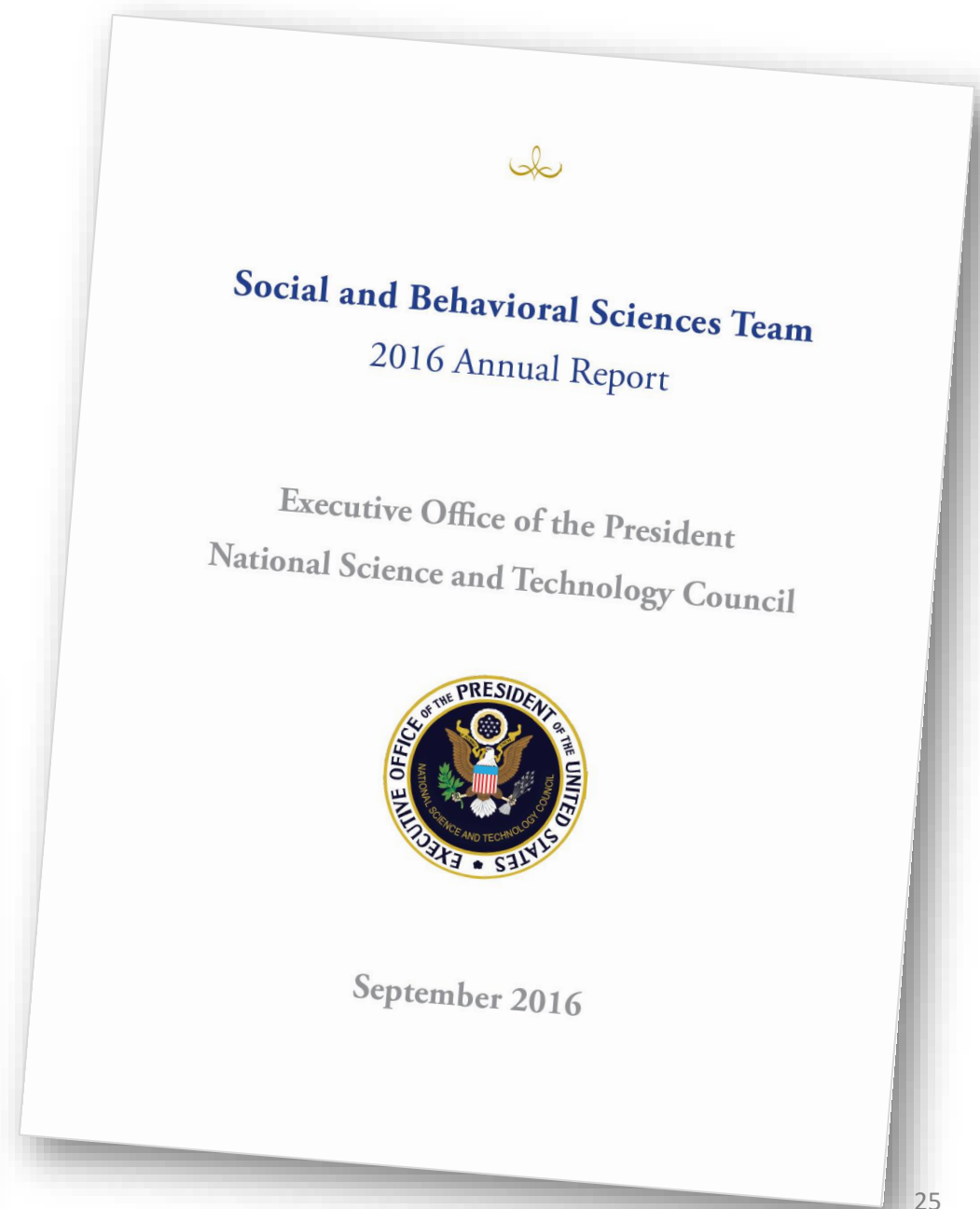
EXPLORING WHAT MAKES US HUMAN



Social, Behavioral & Economic Sciences



National Science Foundation



States and Localities

- Using social science to inform local decisions, address local needs.

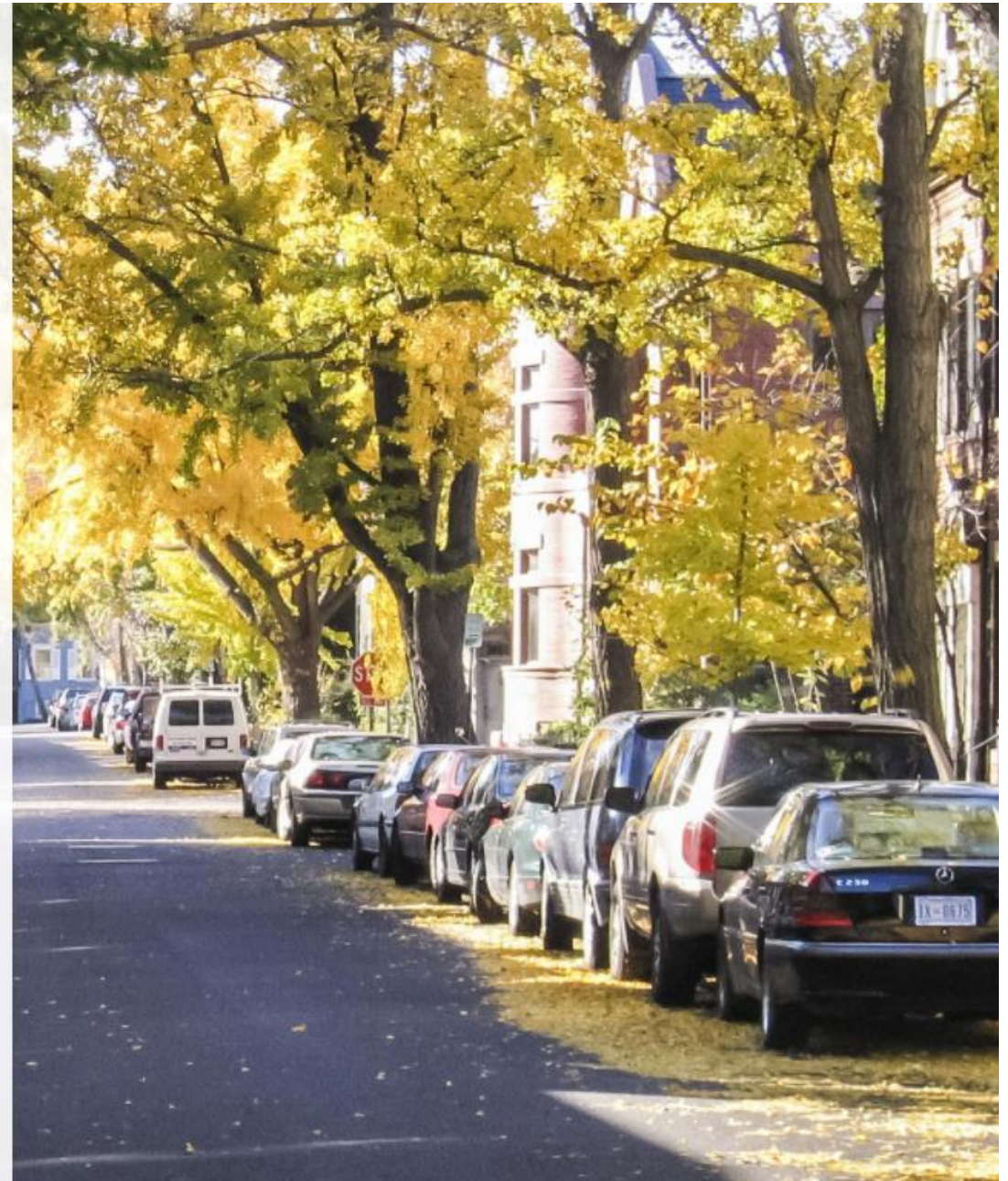




THE **LAB** @ DC

STRONGER EVIDENCE FOR A STRONGER DC

The Lab @ DC is a new team in Mayor Muriel Bowser's administration. We are based in the Office of the City Administrator's Office of Performance Management (OPM) and work with a wide range of agencies. The Lab uses scientific insights and methods to test and improve policies and provide timely, relevant, and high-quality analysis to inform the District's most important decisions. DC residents deserve a government that asks questions, tests policies, and iteratively improves how it serves the community.



THE LAB @ DC

- 📦 Rodent Abatement Predictive Analysis
- 📦 Affordable Housing Survey
- 📦 Flexible Rent Subsidy
- 📦 Policing in Historical and Cultural Context - Training Program Evaluation
- 📦 Improving Outreach & Education
- 📦 Alternatives to Court Experience (ACE) Program Exploratory Analysis
- 📦 457b Enrollment Campaign
- 📦 911 Nurse Triage Line Randomized Controlled Trial
- 📦 Improving Housing Inspections with Predictive Modeling
- 📦 NEAR Act Report: Analysis of Crime Trends in the District of Columbia
- 📦 Dockless bikeshare data analysis and public engagement
- 📦 "Show Up, Stand Out" (SUSO) Program Improvement Project
- 📦 DC Metropolitan Police Department (MPD) Recruitment



Three.
Remaining Questions



Remaining Questions

- Where's the priority—Should intermediary institutions do the translating of the science to stakeholders or work with scientists to train them to speak for themselves?
- System-level Issues—Academics and scientists did not go into research careers to become public speakers or science translators – they came to do research. Where is the incentive?
- Who's in charge?





CONSORTIUM *of* SOCIAL SCIENCE ASSOCIATIONS

Wendy Naus, Executive Director

Email: wnaus@coffa.org

Visit Us:

www.coffa.org

www.whysocialscience.com

 [@COSSADC](https://twitter.com/COSSADC) ★ [#WhySocialScience](https://twitter.com/WhySocialScience)

Washington, DC ★ USA

A decorative background at the top of the slide featuring a network diagram with red and black nodes connected by lines, set against a light red gradient.

Impact of Social Sciences & Humanities

4-5 October 2018, Copenhagen

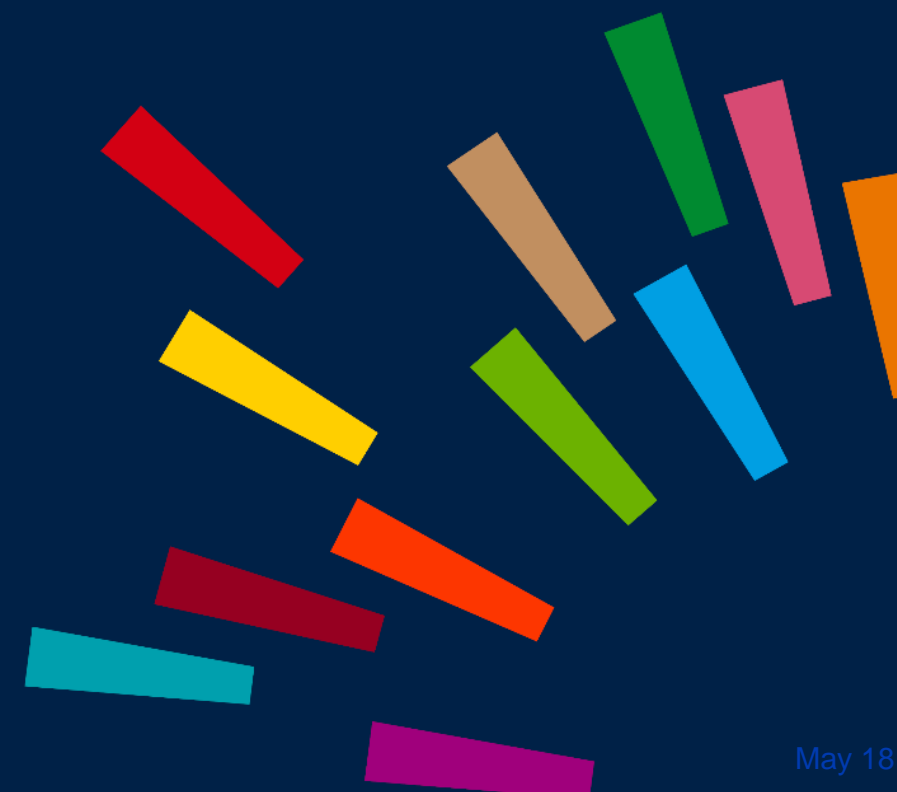
Intermediary institutions

Chris Fellingham

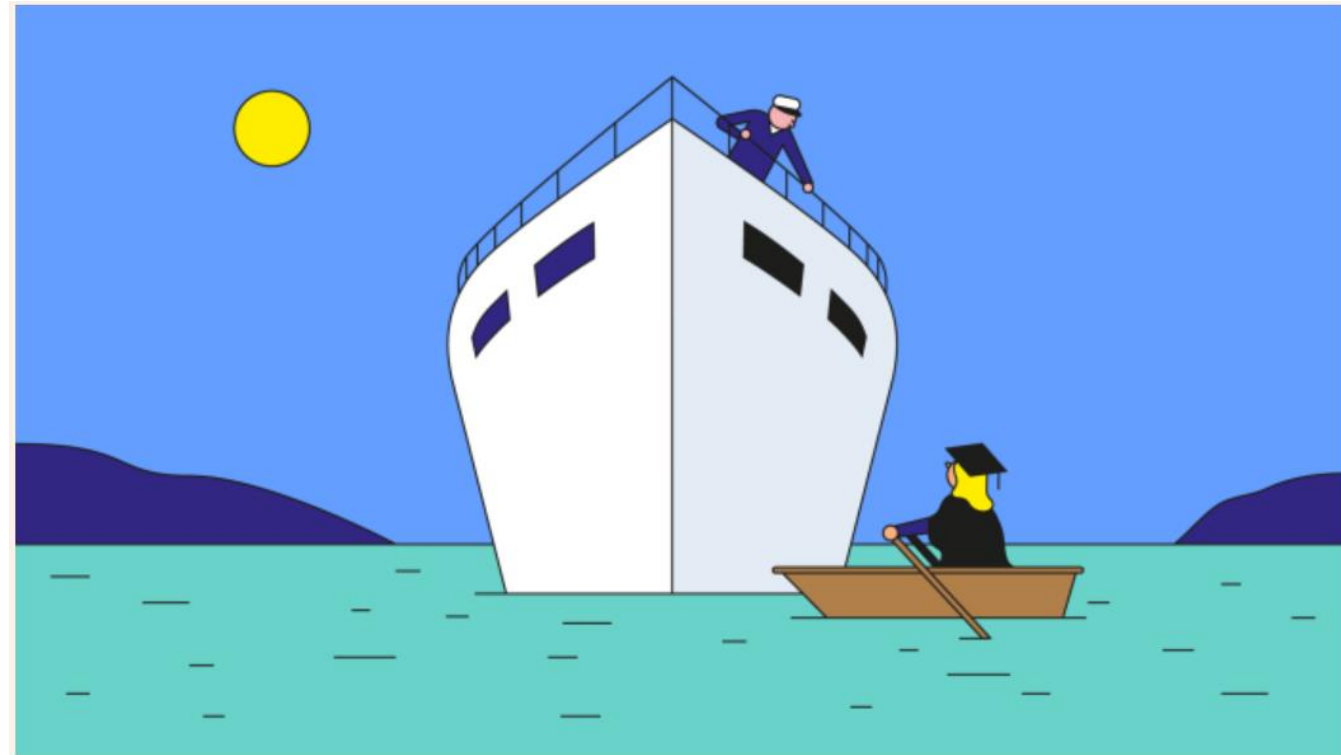
*Licensing & Ventures Manager
at Oxford University Innovation, UK*

OXFORD UNIVERSITY INNOVATION

Bias to impact in intermediary institutions



A more hostile environment



© Harry Haysom

- Populist backlash
- Brahmins vs Merchants

SSH faces a more direct crisis of legitimacy



- Physical and Life Sciences – accessible purpose
- Social Sciences and Humanities value to the general public deemed more limited and contested
- Gove: I think the public have had enough of experts



Challenge has been laid down



- Some in UK top government have even challenged why we fund SSH
- Policymakers have made it clear 'You're good at telling us the problems, we want solutions'
- UK REF to make impact 25% (up from 20%)

How is Oxford innovating to meet these challenges?



- OUI, covering spin outs and licenses now has 2 full time staff to support SSH
- Lean spinout model
- Developing ecosystem: skills, awareness, investor awareness, comms

Beyond profit: Social Enterprises



- Building models to match aspirations of SSH academics
- Setup Social Enterprise fund and metrics

Supporting Social Enterprise creation



National Level



- Group of UK universities win funding to build capacity for spin out and impact
- Capacity building
- Best practice and toolkits

Emerging Intermediary Institutions



zinc

[about zinc](#)

[mission 1](#)

[mission 2](#)

[join us](#)

[events](#)

[contact](#)

Mission 2:



**TO UNLOCK NEW OPPORTUNITIES
FOR PEOPLE
IN PLACES HARD-HIT BY
GLOBALISATION & AUTOMATION**

Growing a toolkit



Not the whole solution, it's a tool

- Impact/Solutions focused
- Scalable
- Experimental driven

THANK YOU



www.innovation.ox.ac.uk

[linkedin.com/company/oxford-university-innovation](https://www.linkedin.com/company/oxford-university-innovation)

 twitter.com/OxUInnovation





Impact of Social Sciences & Humanities

4-5 October 2018, Copenhagen

Intermediary institutions

Panel discussion & Q&A

Lars Klüver (Chair)

Wendy Naus

Chris Fellingham



Impact of Social Sciences & Humanities

4-5 October 2018, Copenhagen

Intermediary institutions

Chair: Lars Klüver

Director Danish Board of Technology Foundation, Denmark

Type your recommendation here

A network diagram with red nodes and lines, some larger than others, set against a light red background.

Impact of Social Sciences & Humanities

4-5 October 2018, Copenhagen

Next up:

12.45-13.45 Lunch

13.45-15.45 Plenary Closing

Lumbye Hall